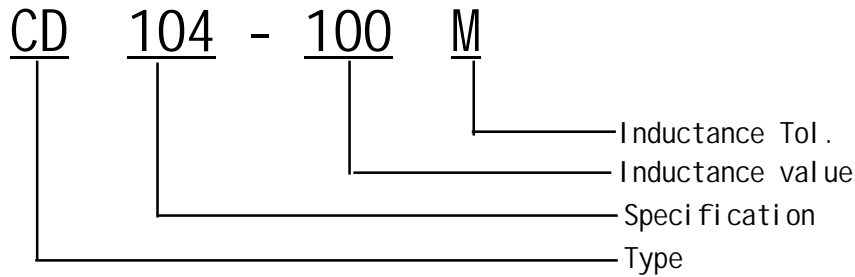


SMD Power Inductors CD104 Series

贴片功率电感CD104系列



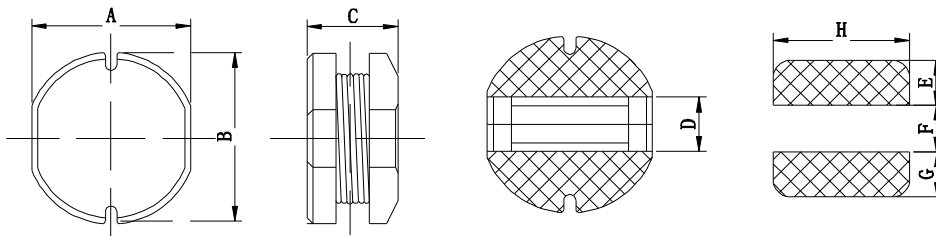
I. Ordering Code:



※ Inductance Tol. J: $\pm 5\%$, K: $\pm 10\%$, M: $\pm 20\%$, N: $\pm 30\%$.

※ Inductance value. 1R0: 1.0uH, 100: 10uH, 101: 100uH, 102: 1000uH.

II. Configuration & Dimensions: (mm)



Size	A	B	C(max)	D	E	F	G	H
CD104	9.00 \pm 0.30	10.0 \pm 0.30	4.20	3.20	3.75	2.50	3.75	9.50

III. Materials :

- a. Core: Ferrite DR core
- b. Wire: Enamelled copper wire
- c. Terminal: Cu/Sn
- d. Encapsulate: Epoxy novolac molding compound
- e. Remark: Products comply with RoHS' requirements

IV. General Specification :

- a. Storage temp. : -40 $^{\circ}$ C ---- +125 $^{\circ}$ C
- b. Operating : -40 $^{\circ}$ C ---- +105 $^{\circ}$ C
- c. Temp. rise : 40 $^{\circ}$ C Max. at rated current.





CD104 Series

Part No.	L (uH)	Test Freq .(KHZ)	Tolerance	D.C.R(Ω)	Rated Current
				MAX	(A)
CD104-1R2M	1.20	100K/0.25V	$\pm 30\%$	9.88m	7.50
CD104-2R2M	2.20	100K/0.25V	$\pm 30\%$	13.0m	4.70
CD104-3R9M	3.90	100K/0.25V	$\pm 30\%$	19.9m	3.20
CD104-4R7M	4.7	100K/0.25V	$\pm 20\%$	28.6m	3.20
CD104-5R6M	5.6	100K/0.25V	$\pm 20\%$	31.2m	3.00
CD104-6R8M	6.8	100K/0.25V	$\pm 20\%$	32.5m	2.70
CD104-8R2M	8.2	100K/0.25V	$\pm 20\%$	39.0m	2.60
CD104-100M	10.0	1.0K/0.25V	$\pm 20\%$	46.8m	2.35
CD104-120M	12.0	1.0K/0.25V	$\pm 20\%$	56.6m	2.10
CD104-150M	15.0	1.0K/0.25V	$\pm 20\%$	67.0m	1.86
CD104-180M	18.0	1.0K/0.25V	$\pm 20\%$	81.3m	1.72
CD104-220M	22.0	1.0K/0.25V	$\pm 20\%$	93.0m	1.61
CD104-270M	27.0	1.0K/0.25V	$\pm 20\%$	0.109	1.24
CD104-330M	33.0	1.0K/0.25V	$\pm 20\%$	0.125	1.20
CD104-390M	39.0	1.0K/0.25V	$\pm 20\%$	0.151	1.20
CD104-470M	47.0	1.0K/0.25V	$\pm 20\%$	0.173	1.08
CD104-560M	56.0	1.0K/0.25V	$\pm 20\%$	0.198	1.00
CD104-680M	68.0	1.0K/0.25V	$\pm 20\%$	0.247	0.900
CD104-820M	82.0	1.0K/0.25V	$\pm 20\%$	0.299	0.820
CD104-101M	100.0	1.0K/0.25V	$\pm 20\%$	0.351	0.720
CD104-121M	120.0	1.0K/0.25V	$\pm 20\%$	0.429	0.680
CD104-151M	150.0	1.0K/0.25V	$\pm 20\%$	0.533	0.600
CD104-181M	180.0	1.0K/0.25V	$\pm 20\%$	0.624	0.550
CD104-221K	220.0	1.0K/0.25V	$\pm 10\%$	0.728	0.520
CD104-271K	270.0	1.0K/0.25V	$\pm 10\%$	0.923	0.420
CD104-331K	330.0	1.0K/0.25V	$\pm 10\%$	1.15	0.400
CD104-391K	390.0	1.0K/0.25V	$\pm 10\%$	1.30	0.370
CD104-471K	470.0	1.0K/0.25V	$\pm 10\%$	1.50	0.330
CD104-561K	560.0	1.0K/0.25V	$\pm 10\%$	1.91	0.320
CD104-681K	680.0	1.0K/0.25V	$\pm 10\%$	2.47	0.260

VI. 额定电流 Reted Current:

电感值下降至初始值的10%或温度上升至40℃时的直流电流值中的最小值。(环境温度20℃)

This indicates the value of current when the inductance is 10% lower than its initial value at D.C. superposition or D.C. current when T=40℃ whichever is lower. (Ta=20℃)

VII. 无铅制品 Lead-free

VIII. 测试仪器 Test instrument : HP4284A, 502BC, CH1062A.

